

Research Paper

Plant Disease detection using Image processing Techniques

1 Malayala Navaneetha2Kunchala Snithya, 3Makad Lalith Kumar, 4 Kotla Manikanta

GUIDE - Dr. Kuna Naresh

Associate professor

Department of Computer Science and Engineering

Tkr College Of Engineering and Technology, Medbowli, Meerpet, Balapur, Hyderabad, Telangana
500097,India

ABSTRACT

Plant disease detection is a critical task in modern agriculture, as early identification of plant infections can significantly improve crop yield and quality. Traditional methods of disease detection rely heavily on manual inspection by experts, which is time-consuming, labor-intensive, and often prone to human error. With the advancement of digital imaging and computational techniques, image processing has emerged as an efficient and reliable solution for automated plant disease diagnosis.

This project focuses on the development of a plant disease detection system using image processing techniques. The system captures images of plant leaves and processes them to identify symptoms such as spots, discoloration, and texture variations. Various preprocessing steps, including image resizing, noise removal, and color space conversion, are applied to enhance the quality of the input images. Segmentation techniques are then used to isolate the infected regions from the healthy portions of the leaf.

Feature extraction methods are employed to analyze characteristics such as color, shape, and texture of the diseased areas. These features are further used for classification using machine learning algorithms such as Support Vector Machines (SVM), Decision Trees, or

Convolutional Neural Networks (CNN). The system is trained on a dataset of healthy and diseased plant images to accurately recognize and categorize different types of diseases.

The proposed system offers a cost-effective and efficient solution for farmers and agricultural experts by enabling real-time disease detection and providing timely recommendations for treatment. This approach not only reduces dependency on manual monitoring but also helps in minimizing crop losses and improving agricultural productivity. Overall, the integration of image processing and machine learning techniques plays a vital role in advancing smart farming practices and sustainable agriculture.

Keywords

Plant Disease Detection, Image Processing, Machine Learning, Convolutional Neural Networks (CNN), Leaf Image Analysis, Feature Extraction, Image Segmentation, Agricultural Automation, Disease Classification, Smart Farming, Digital Agriculture, Pattern Recognition.

INTRODUCTION

Agriculture plays a vital role in the economic development of many countries, especially in regions where a large portion of the population depends on farming for their livelihood. One of the major challenges faced by farmers is the occurrence of plant diseases, which can significantly reduce crop yield and quality. Early detection and proper diagnosis of these diseases are essential to prevent their spread and minimize agricultural losses. However, traditional methods of plant disease identification rely on manual observation by farmers or agricultural experts, which can be time-consuming,

costly, and often inaccurate due to lack of expertise or delayed detection.

With the advancement of technology, image processing techniques have emerged as a powerful tool for automating the detection of plant diseases. By analyzing digital images of plant leaves, stems, or fruits, it is possible to identify disease symptoms such as spots, color changes, and texture variations. These techniques help in capturing detailed visual information that may not be easily noticeable to the human eye. As a result, image processing provides a faster, more reliable, and efficient method for

diagnosing plant diseases compared to traditional approaches.

In recent years, the integration of machine learning and deep learning algorithms with image processing has further enhanced the accuracy of plant disease detection systems. Algorithms such as Convolutional Neural Networks (CNNs) can automatically learn complex patterns and features from large datasets of plant images. This enables the system to classify various plant diseases with high precision. Moreover, such automated systems can be deployed on smartphones or web-based platforms, making them easily accessible to farmers in real-time.

LITERATURE REVIEW

Several research studies have been conducted in the field of plant disease detection using image processing and machine learning techniques, highlighting the importance and effectiveness of automated systems in agriculture. Early approaches primarily focused on traditional image processing methods such as color analysis, thresholding, and edge detection to identify diseased regions in plant leaves. These methods were useful in detecting visible symptoms like spots and discoloration but often lacked accuracy

when dealing with complex backgrounds and varying lighting conditions.

Later, researchers introduced feature extraction techniques that analyze color, texture, and shape characteristics of infected regions. Methods such as Gray-Level Co-occurrence Matrix (GLCM) and Histogram of Oriented Gradients (HOG) were widely used to extract meaningful features from images. These features were then classified using machine learning algorithms like Support Vector Machines (SVM), K-Nearest Neighbors (KNN), and Decision Trees. These approaches significantly improved classification accuracy and enabled the detection of multiple plant diseases across different crops.

In recent years, deep learning techniques, especially Convolutional Neural Networks (CNNs), have revolutionized plant disease detection systems. CNN-based models automatically learn hierarchical features from large datasets, eliminating the need for manual feature extraction. Studies have shown that deep learning models outperform traditional methods in terms of accuracy, robustness, and scalability. Pre-trained models such as AlexNet, VGGNet, and ResNet have been successfully applied for plant disease classification with high performance.

PROBLEM DEFINITION

Plant diseases pose a significant threat to agricultural productivity and food security worldwide. Farmers often face difficulties in identifying plant diseases at an early stage due to the lack of proper knowledge and limited access to agricultural experts. Traditional methods of disease detection rely on manual inspection, which is time-consuming, labor-intensive, and prone to human error. Delayed or incorrect diagnosis can lead to the rapid spread of diseases, resulting in severe crop damage and economic losses.

In many rural and remote areas, farmers do not have access to advanced diagnostic tools or expert guidance, making it challenging to detect and treat plant diseases effectively. Additionally, environmental factors such as lighting conditions, background noise, and variations in leaf appearance make manual identification even more complex. The absence of an efficient, automated, and user-friendly system further worsens the situation.

Therefore, there is a need to develop an intelligent system that can automatically detect and classify plant diseases using image processing techniques. The system

should be capable of analyzing leaf images, identifying disease symptoms accurately, and providing quick results. It should also be cost-effective, easy to use, and accessible to farmers in real-time. Addressing these challenges will help in early disease detection, reduce crop losses, and improve overall agricultural productivity.

PROPOSED SYSTEM

The proposed system is an automated plant disease detection model developed using image processing techniques and machine learning methods. Its main objective is to identify diseases in plant leaves accurately and at an early stage, helping farmers take timely action to protect crops. The system captures or uploads an image of a plant leaf and then processes it through several stages such as image preprocessing, segmentation, feature extraction, and classification.

In the preprocessing stage, the input leaf image is resized and enhanced to remove noise and improve quality. Techniques such as filtering, normalization, and color space conversion are applied to make the image suitable for analysis. After preprocessing, segmentation is performed to separate the diseased portion of the leaf

from the healthy region and background. This helps in focusing only on the infected area for accurate detection.

Once the affected region is identified, important features such as color, texture, and shape are extracted. These features represent the visible symptoms of the disease and are used as input for the classification module. Machine learning algorithms or deep learning models such as Convolutional Neural Networks (CNN) are then applied to classify the disease into specific categories. The trained model compares the extracted patterns with previously learned disease data and predicts the most probable disease type.

SYSTEM ARCHITECTURE

The system architecture for plant disease detection using image processing techniques consists of several interconnected modules that work together to identify diseases from plant leaf images. The process begins with the **image acquisition module**, where the user captures or uploads an image of a plant leaf using a camera, mobile phone, or computer system. This image serves as the input to the system.

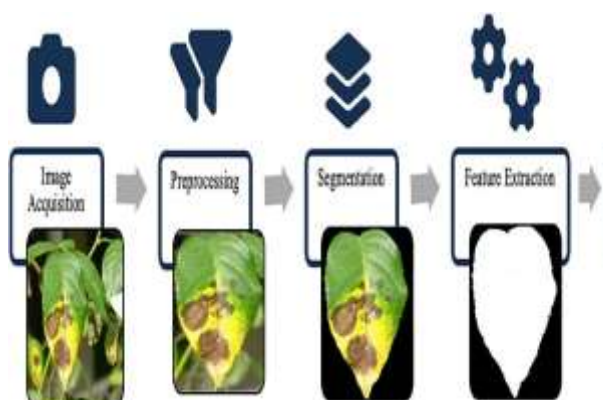
The captured image is then passed to the **preprocessing module**, where operations such as resizing, noise removal, filtering,

and color conversion are performed. The purpose of this module is to improve image quality and prepare it for further analysis. After preprocessing, the image enters the **segmentation module**, which separates the diseased region from the healthy part of the leaf and the background. This helps the system focus only on the infected area.

Next, the segmented image is given to the **feature extraction module**, where important characteristics such as color, texture, and shape are identified. These extracted features are then sent to the **classification module**, which uses machine learning or deep learning algorithms to recognize the specific plant disease. The classifier compares the extracted information with trained data and predicts the disease accurately.

Finally, the result is displayed through the **output module**, where the disease name and possible recommendations for treatment are shown to the user. Thus, the system architecture provides a complete flow from image input to disease prediction output, making the detection process automatic, efficient, and useful for farmers and agricultural experts

SYSTEM ARCHITECTURE



IMPLEMENTATION

The implementation of the plant disease detection system using image processing techniques involves the development of a complete workflow that accepts plant leaf images, processes them, and identifies the disease accurately. The first step in implementation is collecting a dataset of healthy and diseased leaf images. These images are gathered from agricultural databases, research sources, or real-time field images. The collected dataset is then organized into different classes based on the type of plant disease. Proper labeling of images is important because it helps the system learn and classify diseases correctly during training.

After data collection, the next step is image preprocessing. In this stage, all images are resized into a fixed dimension so that they can be processed uniformly by the system. Noise removal techniques such as filtering are applied to improve image

clarity. Color conversion methods may also be used to transform the image into suitable color spaces like RGB, HSV, or grayscale depending on the processing requirement. Image enhancement is performed to improve contrast and make infected regions more visible. This stage ensures that the raw image becomes suitable for further analysis.

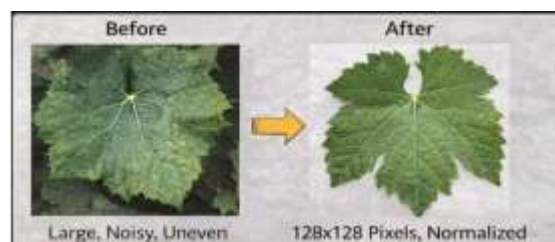
The next phase of implementation is image segmentation, where the affected portion of the leaf is separated from the healthy region and background. Segmentation can be done using thresholding, clustering, or edge detection methods. Once the diseased portion is isolated, feature extraction is carried out. In this step, important characteristics such as color intensity, texture patterns, and leaf shape are measured. These features help in distinguishing one disease from another. In advanced systems, deep learning models automatically extract these features without requiring manual intervention.

RESULTS AND DISCUSSION

The plant disease detection system developed using image processing techniques was tested using a dataset containing both healthy and diseased leaf images. The system was able to

successfully identify and classify various plant diseases based on the visual features extracted from the images. The performance of the model was evaluated using standard metrics such as accuracy, precision, recall, and F1-score. The results indicated that the system achieved high accuracy in detecting diseases, especially when deep learning techniques like Convolutional Neural Networks (CNN) were used for classification.

During testing, it was observed that the preprocessing and segmentation stages played a crucial role in improving the overall performance of the system. Proper noise removal and image enhancement helped in highlighting the infected regions clearly, while accurate segmentation ensured that only the relevant diseased portion of the leaf was analyzed. This significantly improved the feature extraction process and, in turn, enhanced the classification results.



CONCLUSION

In this project, a plant disease detection system using image processing techniques has been successfully developed to identify diseases in plant leaves accurately and efficiently. The system integrates various stages such as image acquisition, preprocessing, segmentation, feature extraction, and classification to analyze leaf images and detect diseases at an early stage. By utilizing machine learning and deep learning approaches, especially Convolutional Neural Networks (CNN),



the system demonstrates high accuracy and reliability in disease classification.

The proposed system overcomes the limitations of traditional manual methods by providing a fast, automated, and user-friendly solution for farmers and agricultural experts. It reduces human effort, minimizes errors, and enables timely detection of plant diseases, which is crucial for preventing crop loss and improving agricultural productivity. The ability to deploy the system as a web or mobile application further enhances its accessibility and practical usability in real-time environments.

Although the system shows promising results, certain challenges such as varying environmental conditions, image quality, and dataset limitations still exist. These factors can affect the performance of the model in real-world scenarios. However, with continuous advancements in image processing and artificial intelligence, these limitations can be addressed effectively.

REFERENCE

□ Mohanty, S. P., Hughes, D. P., & Salathé, M. (2016). *Using Deep Learning*

for Image-Based Plant Disease Detection. *Frontiers in Plant Science*, 7, 1419.

□ Ferentinos, K. P. (2018). *Deep Learning Models for Plant Disease Detection and Diagnosis*. *Computers and Electronics in Agriculture*, 145, 311–318.

□ Pujari, J. D., Yakkundimath, R., & Byadgi, A. S. (2016). *Image Processing Based Detection of Fungal Diseases in Plants*. *Procedia Computer Science*, 46, 1802–1808.

□ Arivazhagan, S., Newlin Shebiah, R., Ananthi, S., & Varthini, S. V. (2013). *Detection of Unhealthy Region of Plant Leaves and Classification of Plant Leaf Diseases Using Texture Features*. *Agricultural Engineering International*.

□ Patil, J. K., & Kumar, R. (2011). *Advances in Image Processing for Detection of Plant Diseases*. *Journal of Advanced Bioinformatics Applications and Research*, 2(2), 135–141.

□ Sladojevic, S., Arsenovic, M., Anderla, A., Culibrk, D., & Stefanovic, D. (2016). *Deep Neural Networks Based Recognition of Plant Diseases by Leaf Image Classification*. *Computational Intelligence and Neuroscience*.

- Barbedo, J. G. A. (2013). *Digital Image Processing Techniques for Detecting, Quantifying and Classifying Plant Diseases*. SpringerPlus, 2, 660.

- Too, E. C., Yujian, L., Njuki, S., & Yingchun, L. (2019). *A Comparative Study of Fine-Tuning Deep Learning Models for Plant Disease Identification*. Computers and Electronics in Agriculture, 161, 272–279.

- Zhang, S., Huang, W., & Zhang, C. (2019). *Three-Channel Convolutional Neural Networks for Vegetable Leaf Disease Recognition*. Cognitive Systems Research, 53, 31–41.

- Brahim, M., Boukhalifa, K., & Moussaoui, A. (2017). *Deep Learning for Tomato Diseases: Classification and Symptoms Visualization*. Applied Artificial Intelligence, 31(4), 299–315.